

# RUG ROSEMARY

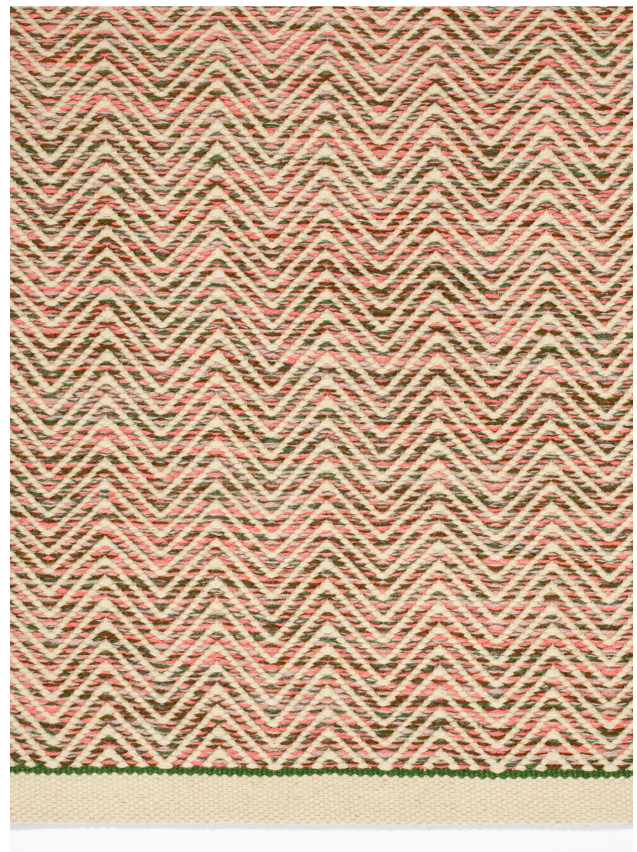
DESIGNER: LARS NILSSON, 2018

The warm colour scheme in the Rosemary rug is reminiscent of spring and summer, and fits beautifully with the Anacapri fabric from the same collection. The rug is handmade, and a part of the Capri collection, created by designer Lars Nilsson for Svenskt Tenn in the spring of 2018.

---

ITEM NR:	108713
MEASUREMENTS:	250X350 CM
MATERIAL:	WOOL, LINEN WARP

---



HANDCRAFTED

*S V E N S K T T E N N*

## CARE INSTRUCTIONS

The rug is made out of hand spun, uncoloured wool yarn on linen warp. The colour may vary depending on the wool's natural colours. Smaller stains can be removed with a damp cloth. For larger stains, dry clean or specialist water wash is recommended.